



US Patent: D455, 300S
GB Patent: GB2,365,991B

ScienceDesk

Anti-Vibration Workstations for Imaging Applications

Thorlabs offers a series of high-quality, modular workstations known as ScienceDesks, which are specifically designed to reduce vibrations commonly found in a lab that can cause experimental complications. These ScienceDesks are ideally suited for microscopy users with vibration-sensitive applications such as confocal microscopy, high resolution microscopy, electrophysiology, cell injection, and scanning probe microscopy.

We offer four different workstation sizes, all at a comfortable, ergonomic height. A wide range of shelving options and accessories can be mounted to the ScienceDesk frame. The frame encloses the tabletop so as to prevent the experimental area from being accidentally jarred. There are three frame types with differing isolation properties and two grades of damped, high stiffness tabletops.

Features

- Rigid, Passive, and Active-Air Self-Leveling Vibration Isolation Versions
- Variety of Sizes and Work Surfaces Available
- Accessories Allow Customization and Maximization of Work Space
- Patented Ergonomic Design Allows for Maximum Comfort and Leg Room
- Optional Heavy-Duty Casters Enable Portability

ScienceDesk



Frames

- Modular Design Allows for Customization of Your Work Space
- Range of Frame-Mountable Accessories Available
- Steel Frame Design

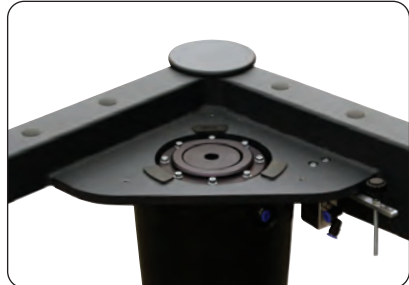


The ScienceDesk frame melds function and form to produce a portable, industry-leading vibration isolation platform. ScienceDesk frames feature a durable welded-steel construction. The tabletop is inset in the ScienceDesk frame so that it is protected from incidental contact.

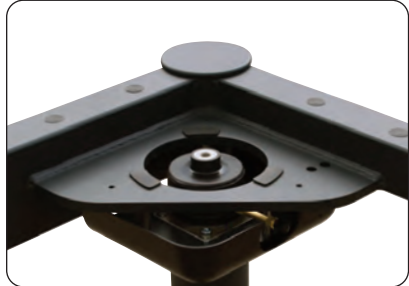
When building a ScienceDesk workstation, start by choosing the frame, then the tabletop, and finally the desired accessories. Two criteria need to be considered when choosing a frame: the size of the work surface needed and the level of vibration isolation for that work surface.

The graphs on the facing page show the vibration isolation performance of the active-air and passive frames. The graphic to the right of these graphs provides a general guideline concerning the required isolation performance based on desired imaging resolution. Factors such as ambient noise should also be considered when selecting a frame. Please contact techsupport@thorlabs.com to discuss your application.

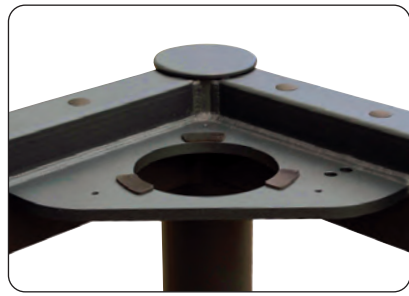
- Active-Air – Highest Level of Vibration Isolation, Suitable for the Most Sensitive Imaging Applications (Requires Air Supply or Compressor)
- Passive – Simple, Effective Vibration Isolation from Critical Floor Vibrations
- Rigid – No Vibration Isolation



Active-Air, Self-Leveling Vibration Isolation



Standard, Passive Vibration Isolation



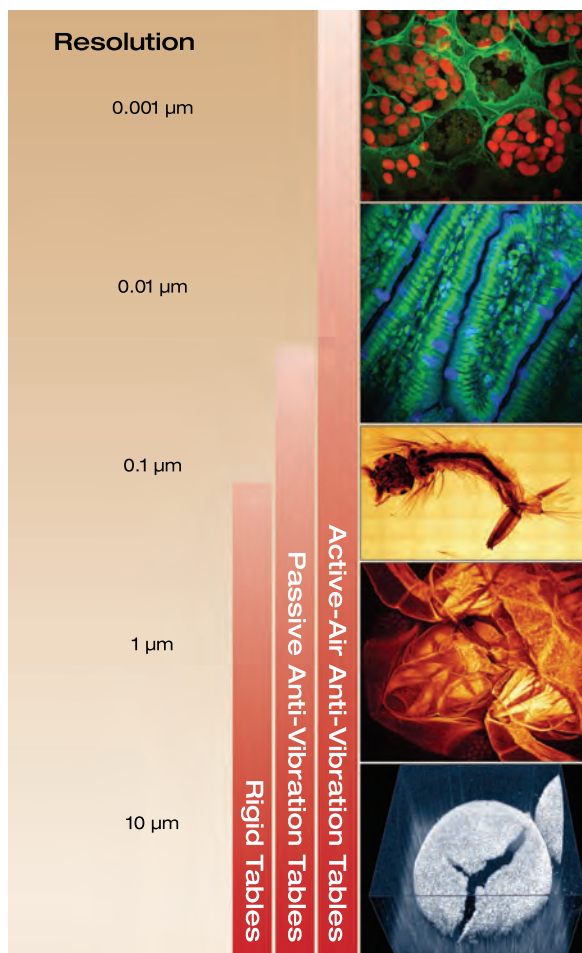
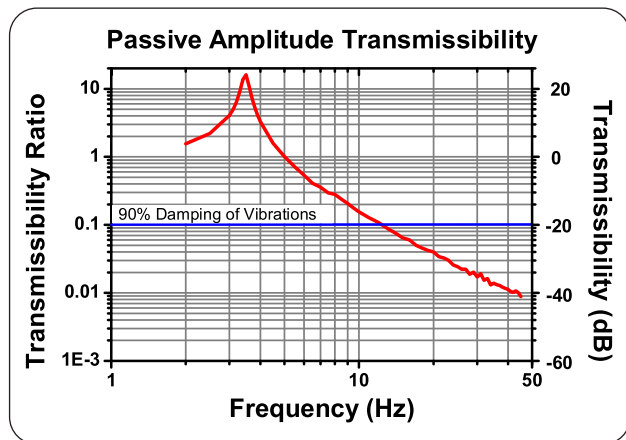
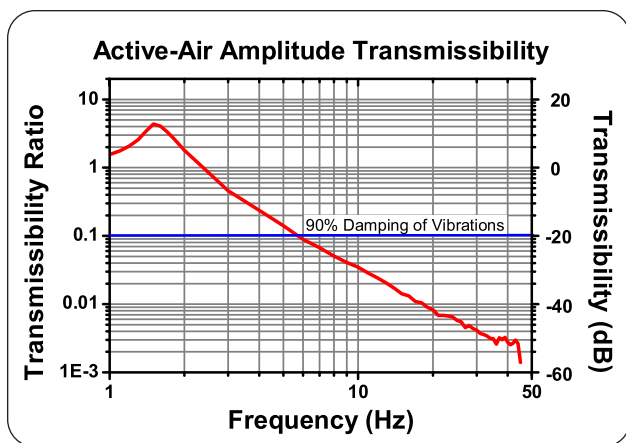
Non-Isolating Rigid Support

Performance Specifications

Series	Active-Air	Passive	Rigid
Isolator Natural Frequency	1.5 Hz Vertical 1.4 Hz Horizontal	3.5 Hz Vertical	N/A
Isolation Efficiency @ 10 Hz	97% Vertical 96% Horizontal	84% Vertical	N/A
Load Capacity	1,545 lbs (700 kg)	Standard: 50 - 570 lbs (24 - 260 kg) Heavy Duty: 300 - 1540 lbs (135-700 kg)	1,545 lbs (700 kg)
Frame Size	7.7" (195 mm) Deeper and Wider than Tabletop Size		
Frame Height	30.1" ± 0.6" (765 ± 15 mm)		
Self-Leveling Repeatability	±0.020" (0.50 mm)	N/A	N/A



THORLABS



ScienceDesk Frames – Active-Air, Self-Leveling Vibration Isolation*

ITEM #	\$	£	€	RMB	ACCEPTED BREADBOARD SIZE
SDA7590	\$ 2,500.00	£ 1,733.00	€ 2,219.50	¥ 21,111.00	2.5' x 3' (750 mm x 900 mm)
SDA75120	\$ 2,525.00	£ 1,750.50	€ 2,241.50	¥ 21,322.00	2.5' x 4' (750 mm x 1200 mm)
SDA90120	\$ 2,550.00	£ 1,767.50	€ 2,264.00	¥ 21,533.00	3' x 4' (900 mm x 1200 mm)

*An air compressor is required. Please see page 10 for our offerings.

ScienceDesk Frames – Standard, Passive Vibration Isolation

ITEM #	\$	£	€	RMB	ACCEPTED BREADBOARD SIZE
SDP6090	\$ 1,625.00	£ 1,121.25	€ 1,446.25	¥ 13,715.00	2' x 3' (600 mm x 900 mm)
SDP7590	\$ 1,650.00	£ 1,144.00	€ 1,465.00	¥ 13,933.00	2.5' x 3' (750 mm x 900 mm)
SDP75120	\$ 1,675.00	£ 1,161.00	€ 1,487.00	¥ 14,144.00	2.5' x 4' (750 mm x 1200 mm)
SDP90120	\$ 1,700.00	£ 1,178.50	€ 1,509.50	¥ 14,355.00	3' x 4' (900 mm x 1200 mm)

ScienceDesk Frames – Heavy-Duty, Passive Vibration Isolation

ITEM #	\$	£	€	RMB	ACCEPTED BREADBOARD SIZE
SDH7590	\$ 1,736.00	£ 1,203.50	€ 1,541.00	¥ 14,651.84	2.5' x 3' (750 mm x 900 mm)
SDH75120	\$ 1,775.00	£ 1,230.50	€ 1,541.00	¥ 14,981.00	2.5' x 4' (750 mm x 1200 mm)
SDH90120	\$ 1,800.00	£ 1,248.00	€ 1,598.00	¥ 15,192.00	3' x 4' (900 mm x 1200 mm)

ScienceDesk Frames – Rigid Supports

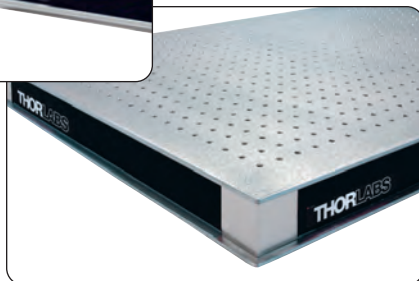
ITEM #	\$	£	€	RMB	ACCEPTED BREADBOARD SIZE
SDR6090	\$ 1,225.00	£ 845.25	€ 1,090.25	¥ 10,339.01	2' x 3' (600 mm x 900 mm)
SDR7590	\$ 1,250.00	£ 866.60	€ 1,109.80	¥ 10,556.00	2.5' x 3' (750 mm x 900 mm)
SDR75120	\$ 1,275.00	£ 883.90	€ 1,132.00	¥ 10,767.00	2.5' x 4' (750 mm x 1200 mm)
SDR90120	\$ 1,300.00	£ 901.20	€ 1,154.20	¥ 10,978.00	3' x 4' (900 mm x 1200 mm)



Tabletops



**Performance Series
without Holes**



PerformancePlus Series with Holes

- Unique Athermalized Design for Excellent Thermal Stability
- Sealed Mounting Holes Make it Simple to Contain and Clean up Spills or Retrieve Lost Screws (PerformancePlus Series Only)
- Steel Core and Internal Damping Provide Both Static and Dynamic Rigidity
- PerformancePlus Tabletops Have Enhanced Damping (Improves Dynamic Performance for More Demanding Applications)

When choosing a tabletop for your ScienceDesk, you will first need to determine the tabletop size that fits your frame. Next, choose the desired performance of the work surface and whether you want a tabletop with or without holes.

Thorlabs recommends members of our Performance and PerformancePlus series of tabletops for use with our ScienceDesk frames. The Performance Series is comprised of 60 mm (2.4") thick breadboards that offer intermediate stiffness and damping characteristics. Alternatively, for applications that are extremely sensitive to vibrations, Thorlabs also offers a PerformancePlus line. Like the Performance series, PerformancePlus breadboards are 60 mm (2.4") thick and offer intermediate stiffness, but these breadboards feature enhanced damping characteristics.

Finally, after choosing the breadboard size and desired performance characteristics, consider whether you would prefer a breadboard with or without holes. The Performance Series breadboards are available with or without regularly spaced 1/4"-20 (M6 x 1.0) mounting holes. Tabletops without mounting holes are well suited for applications prone to spills. PerformancePlus breadboards are only available with 1/4"-20 (M6 x 1.0) mounting holes, but a seal is used beneath the holes to help contain spills and increase rigidity.

Series	Performance	PerformancePlus
Flatness (over 0.3 m ²)	±0.005" (0.13 mm)	±0.004" (0.10 mm)
Damping	Nominal	Enhanced
Thickness*	2.4" (60 mm)	
Construction	Double-Plate, Single Honeycomb Core, Athermalized Design	Triple-Plate, Double Honeycomb Core, Athermalized Design – Increased Rigidity
Top and Bottom Plates	Magnetic Stainless Steel, 3/16" (5 mm) Thick	
Core	High Density Plated Steel Honeycomb	High Density Plated Steel Honeycomb with Intermediate Plated Steel
Top Surface Finish	Solid Stainless Steel	

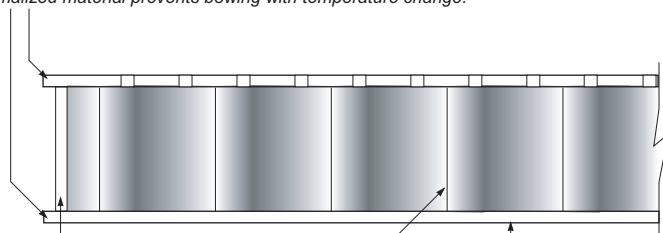
* 4.3" (110 mm) Versions also available. Please contact us for details.



Performance Series

Stainless Steel Top and Bottom Skin

Athermalized material prevents bowing with temperature change.



Steel Side Walls

Helps to provide greater stiffness.

Steel Honeycomb

Provides a high strength-to-weight ratio.

Hot Press Bonded

Entire breadboard bonded under high pressure and temperature to provide greater rigidity and stiffness.

PerformancePlus Series

Stainless Steel Top and Bottom Skin

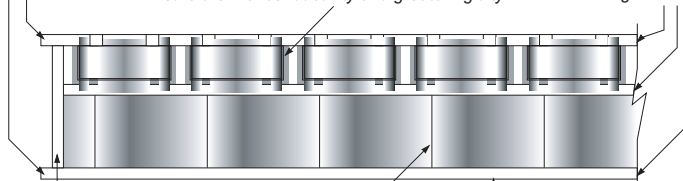
Athermalized material prevents bowing with temperature change.

Steel Sealing Cups

Ensure thermal conductivity and greater rigidity

Triple Layer

Creates shorter elements between top and bottom skin, increasing stiffness



Steel Side Walls

Helps to provide greater stiffness.

Steel Honeycomb

Provides a high strength-to-weight ratio.

Hot Press Bonded

Entire breadboard bonded under high pressure and temperature to provide greater rigidity and stiffness.

Performance Series ScienceDesk Tabletops (Breadboards) with Mounting Holes*

ITEM #	METRIC ITEM #	\$	£	€	RMB	SIZE
PBH11106	PBH51506	\$ 810.00	£ 561.60	€ 719,20	¥ 6,839.70	3' x 2' (900 mm x 600 mm)
PBH11111	PBH51511	\$ 1,020.00	£ 707.10	€ 905,60	¥ 8,613.00	3' x 2.5' (900 mm x 750 mm)
PBH11112	PBH51512	\$ 1,160.00	£ 804.20	€ 1,029,90	¥ 9,795.10	4' x 2.5' (1200 mm x 750 mm)
PBH11115	PBH51515	\$ 1,240.00	£ 859.60	€ 1,100,90	¥ 10,471.00	4' x 3' (1200 mm x 900 mm)

*Imperial breadboards have 1/4"-20 holes on 1" centers. Metric breadboards have M6 x 1.0 holes on 25 mm centers.

Performance Series ScienceDesk Tabletops (Breadboards) without Mounting Holes

ITEM #	\$	£	€	RMB	SIZE
PBH11106/NH	\$ 689.00	£ 477.70	€ 611,70	¥ 5,818.00	3' x 2' (600 mm x 900 mm)
PBH11111/NH	\$ 869.00	£ 602.50	€ 771,60	¥ 7,337.90	3' x 2.5' x 2.4" (900 mm x 750 mm)
PBH11112/NH	\$ 985.00	£ 682.90	€ 874,50	¥ 8,317.40	4' x 2.5' x 2.4" (1200 mm x 750 mm)
PBH11115/NH	\$ 1,054.00	£ 730.70	€ 935,80	¥ 8,900.00	4' x 3' x 2.4" (1200 mm x 900 mm)

PerformancePlus Series ScienceDesk Tabletops (Breadboards) with Mounting Holes*

ITEM #	METRIC ITEM #	\$	£	€	RMB	SIZE
PBI11106	PBI51506	\$ 1,010.00	£ 700.20	€ 896,70	¥ 8,528.50	3' x 2' (900 mm x 600 mm)
PBI11111	PBI51511	\$ 1,300.00	£ 901.20	€ 1,154,20	¥ 10,978.00	3' x 2.5' (900 mm x 750 mm)
PBI11112	PBI51512	\$ 1,480.00	£ 1,026.00	€ 1,314,00	¥ 12,498.00	4' x 2.5' (1200 mm x 750 mm)
PBI11115	PBI51515	\$ 1,565.00	£ 1,085.00	€ 1,389,50	¥ 13,215.00	4' x 3' (1200 mm x 900 mm)

*Imperial breadboards have 1/4"-20 holes on 1" centers. Metric breadboards have M6 x 1.0 holes on 25 mm centers.



ScienceDesk

Monitor Mount

Multidirectional clamp supports most types of flat screen monitors.

Tabletops

Our tabletops have a high strength-to-weight ratio and are made with a honeycomb core and steel top and bottom plates. They have excellent thermal stability and rigidity. Our PerformancePlus range contains enhanced internal damping, which improves dynamic performance for more demanding applications. A range of sizes is available to accommodate a variety of microscope systems. Choose from versions with or without tapped mounting holes.

ScienceDesk Frames

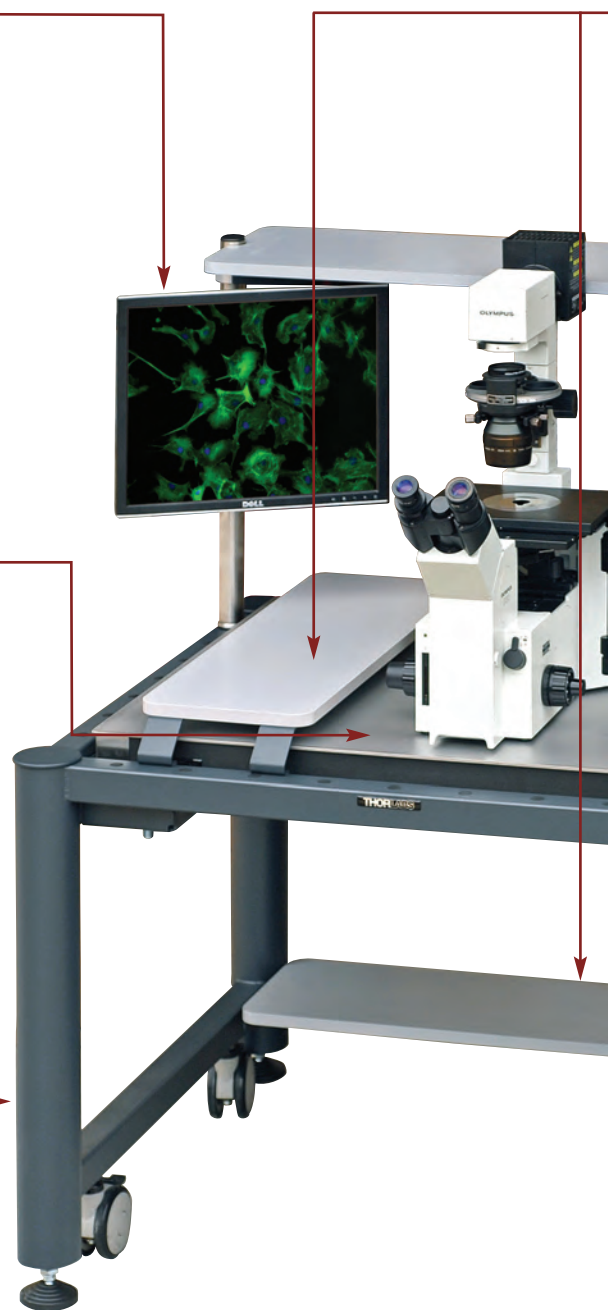
The ScienceDesk frame fully encloses the tabletop, protecting it from accidental knocks and allowing the placement of accessories. We offer three variants of our frames in different sizes to suit a range of microscopy-based applications:

Rigid: For applications in which vibration isolation is not required.

Passive: Non-leveling air mounts absorb both vertical and horizontal vibrations from the floor and prevent them from reaching the tabletop. This is an ideal solution for microscopy applications that do not require more stringent vibration isolation.

Active-Air: A pneumatic self-leveling design provides both horizontal and vertical vibration isolation of the tabletop and effectively attenuates low frequency vibrations. This high-performance isolation system is ideal for demanding applications such as patch clamping, cell manipulation, and scanning probe microscopy.

Thorlabs' ScienceDesk accessories can be used on almost any worksp



For further information, please go to www.thorlabs.com or contact us to discuss your requirements.

and Accessories



THORLABS

frames, tabletops, and
configured to satisfy
space requirement.



Equipment Shelves

The modular design of the ScienceDesk allows the shelving to be mounted in various locations. A variety of shelving options are available, including ones that attach above, beside, or below the work surface.

Keyboard Holders

The frame-mounted keyboard and mouse holder rotates 360° allowing it to be ergonomically positioned.

PC Shelf

This specialized equipment shelf conveniently holds a computer tower.

Mobility

Optional heavy-duty casters allow smooth movement of the desk within the lab. Alternatively, leveling feet can be adjusted to fix the desk in place.

Not Shown:

Adjustable Wrist Rest

Designed to provide the optimal height and angle for delicate instrument adjustments on the tabletop.

Faraday Enclosures

Enclosures are available for applications requiring shielding from electromagnetic interference.



Accessories

Keyboard Holder

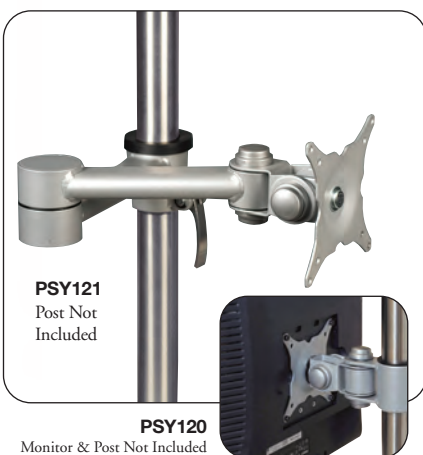


- Includes Wrist Pad
- Attaches to ScienceDesk Frame

The frame-mounted keyboard holder is suitable for most keyboards and mouse pads. It attaches to the frame's side rails and provides vertical adjustment and 360° of horizontal positioning.

ITEM #	\$	£	€	RMB	DESCRIPTION
PSY132	\$ 399.00	£ 276.60	€ 354,30	¥ 3,369.20	Frame-Mounted Keyboard Support

Flat Screen Support Bracket



- Compatible with 75 mm x 75 mm and 100 mm x 100 mm VESA Patterns
- Mounts to a Ø1.5" Post

The flat screen support bracket is compatible with 75 mm x 75 mm and 100 mm x 100 mm VESA mounting patterns. A Ø1.5" post, like our PSY160 featured on the facing page, is required and sold separately. The PSY120 allows for up/down and left/right adjustments. The PSY121 features an articulating arm, allowing for more varied positioning of the monitor.

ITEM #	\$	£	€	RMB	DESCRIPTION
PSY120	\$ 105.00	£ 72.80	€ 93,30	¥ 886.70	Flat Screen Support Bracket
PSY121	\$ 150.00	£ 94.50	€ 139,50	¥ 1,300.50	Flat Screen Support Bracket and Articulating Arm

Casters



- Locking Mechanism Prevents Unintentional Movement
- Max Load Capacity of 704 lbs (320 kg), Including the Frame

The casters come in a set of four, attach to the bottom of a ScienceDesk frame, and convert it into a mobile workstation. The casters feature a locking mechanism to prevent inadvertent movement when the frame's feet are not lowered. Casters can be fitted to the ScienceDesk frame before shipment upon request.

ITEM #	\$	£	€	RMB	DESCRIPTION
PSY140	\$ 125.00	£ 86.70	€ 111,00	¥ 1,055.60	Set of Four Casters

Adjustable Wrist Rest



- Keeps Arms Elevated Above Breadboard
- Padded for Comfort

This adjustable wrist rest mounts to the upper front rail of the ScienceDesk frame. It is designed to provide the optimum height and angle for performing delicate instrument adjustments with high accuracy and low fatigue. The padded portion of the wrist rest is made from molded foam, which provides extra comfort for the user. It comes with integrated mounting studs and locking bolts.

ITEM #	\$	£	€	RMB	FOR BREADBOARDS	DIMENSION
PSY100	\$ 150.00	£ 104.00	€ 133,20	¥ 1,266.70	2.4" (60 mm) Thick or 2.2" (55 mm) Thick	31.5" x 2.4" (800 mm x 60 mm)



Post Assembly

- Total Length: 24" (600 mm)
- Ideal for Mounting Ø1.5" Post Accessories
- Mounting Hardware Included

These posts are suitable for mounting auxiliary equipment. They can be positioned and mounted on the ScienceDesk frame. The post assembly has a 1.5" (38 mm) outer diameter and a usable length of 23.5" (597 mm).

ITEM #	\$	£	€	RMB	SIZE
PSY160	\$ 65.00	£ 45.10	€ 57.80	¥ 548.90	Ø1.5" x 24" (Ø38 mm x 600 mm)

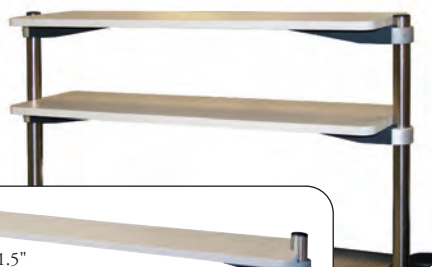


Overhead Shelves

- 110 lbs (50 kg) Max Load Capacity
- 11.8" (300 mm) Shelf Depth

These standard overhead shelves span the rear of the ScienceDesk and provide a shelf depth of 11.8" (300 mm). They can be mounted to either side of the ScienceDesk frame using the included 600 mm posts, and the height is adjustable. The PSY201 and PSY202 come with two posts and one shelf. Additional shelves can be purchased separately (PSY201/S and PSY202/S).

PSY201 shown with an additional shelf, PSY201/S, which is sold separately.



Two Ø1.5"
Support Posts Included with
PSY201 or PSY202

ITEM #	\$	£	€	RMB	FRAME LENGTH	SHELF DIMENSION
PSY201	\$ 275.00	£ 190.70	€ 244.20	¥ 2,322.20	36" (900 mm)	36" x 12" (900 mm x 300 mm)
PSY202	\$ 285.00	£ 197.60	€ 253.10	¥ 2,406.60	48" (1200 mm)	48" x 12" (1200 mm x 300 mm)
PSY201/S	\$ 160.00	£ 110.40	€ 142.40	¥ 1,529.60	36" (1200 mm)	Additional Shelf, 36" x 12" (900 mm x 300 mm)
PSY202/S	\$ 170.00	£ 117.30	€ 151.30	¥ 1,625.20	48" (1200 mm)	Additional Shelf, 48" x 12" (1200 mm x 300 mm)

Single Shelf

- 10.9" x 11.8" (278 mm x 300 mm) Shelf Size
- Includes Ø1.5" x 24" (Ø38 mm x 600 mm) Post
- 44 lbs (20 kg) Max Load Capacity

The single shelf can be mounted on the upper side or on the rear rails of the ScienceDesk base. It is ideal for mounting electronics above the isolated work surface.

ITEM #	\$	£	€	RMB	SHELF DIMENSION
PSY190	\$ 135.00	£ 93.60	€ 119.90	¥ 1,140.00	10.9" x 11.8" (278 mm x 300 mm)

One Ø1.5"
Support Post Included



PC Shelf

- Designed to Hold a PC
- 10.2" x 17.7" (260 mm x 450 mm)
- Max Load Capacity of 44 lbs (20 kg)

The PC shelf, which has a 44 lbs (20 kg) load capacity, can be mounted to the upper or lower rails of the ScienceDesk. If the shelf is positioned on the lower rails of the ScienceDesk, it is ideally suited for supporting a PC.

ITEM #	\$	£	€	RMB	SHELF DIMENSION
PSY180	\$ 50.00	£ 34.70	€ 44.40	¥ 422.30	10.2" x 17.7" (260 mm x 450 mm)





Accessories *continued*

Side Shelves



- Versions for 750 mm and 900 mm Depth ScienceDesks
- 23.6" (600 mm) Width
- 110 lbs (50 kg) Max Load Capacity

The side shelf accessory can be mounted to either side of the upper side rails of the ScienceDesk. It provides a large work surface that can be used without disturbing the breadboard-mounted experiment.

ITEM #	\$	£	€	RMB	FRAME LENGTH	SHELF DIMENSION
PSY350	\$ 175.20	£ 121.50	€ 155.60	¥ 1,479.40	750 mm	29.7" x 23.6" (755 mm x 600 mm)
PSY351	\$ 185.00	£ 128.30	€ 164.30	¥ 1,562.20	900 mm	35.6" x 23.6" (905 mm x 600 mm)

Sample Preparation/Staging Shelves



- Raised Above Breadboard Surface
- Max Load Capacity of 33 lbs (15 kg)

The preparation shelf rests on the upper rails of the ScienceDesk. By resting on the rails, a user can create usable work space while not disturbing the isolated breadboard, and the shelf can be easily repositioned on the frame. The shelf length corresponds to the width of the table.

ITEM #	\$	£	€	RMB	FRAME LENGTH	SHELF DIMENSION
PSY250	\$ 80.00	£ 55.50	€ 71.10	¥ 675.60	750 mm	250 mm x 750 mm
PSY251	\$ 85.00	£ 59.00	€ 75.50	¥ 717.80	900 mm	250 mm x 900 mm
PSY252	\$ 77.50	£ 48.83	€ 72.08	¥ 654.10	600 mm	250 mm x 600 mm

Under Shelves



- 250 mm Shelf Depth
- Max Load Capacity of 110 lbs (50 kg)

The under shelf spans the rear of the ScienceDesk, providing a 9.9" (250 mm) shelf depth. The shelf is mounted on the rear or side rails of the lower frame.

ITEM #	\$	£	€	RMB	FRAME LENGTH	SHELF DIMENSION
PSY300	\$ 80.00	£ 55.50	€ 71.10	¥ 675.60	750 mm	750 mm x 250 mm
PSY301	\$ 85.00	£ 59.00	€ 75.50	¥ 717.80	900 mm	900 mm x 250 mm
PSY302	\$ 90.00	£ 62.40	€ 80.00	¥ 760.00	1200 mm	1200 mm x 250 mm

Air Compressors and Pumps



PTA011, PTA511, PTA511-EC

When using an Active-Air frame, a pressurized air supply is needed. Thorlabs offers air compressors that are compatible with the ScienceDesk Active-Air frames for this purpose. Versions are available for USA, UK, and European power outlets.

PTA126

If you are using a Passive frame, the isolators may need to be refilled with air from time to time. Thorlabs offers a foot pump with a Schrader-type connector for this purpose.



ITEM #	\$	£	€	RMB	DESCRIPTION
PTA011	\$ 535.50	£ 371.30	€ 475.50	¥ 4,519.62	Air Compressor, 110/115 V, 60 Hz, USA
PTA511	\$ 535.50	£ 371.30	€ 475.50	¥ 4,519.62	Air Compressor, 220/240 V, 50 Hz, UK
PTA511-EC	\$ 535.50	£ 371.30	€ 475.50	¥ 4,519.62	Air Compressor, 220/240 V, 50 Hz, EU
PTA126	\$ 39.90	£ 27.70	€ 35.50	¥ 336.76	Passive Frame Foot Pump

Faraday Cage Enclosure



THORLABS

- Isolates Experiments from Disruptive Electromagnetic Waves

- Shielding Effectiveness
>70 dB at 10 MHz

- Removable Magnetic Panels for Quick Access to Experiment

- Post-Mounted ScienceDesk Accessories Fit Inside

- For 750 mm x 900 mm ScienceDesk Frame

Experiments in electrophysiology, confocal microscopy, and other sensitive applications must often be shielded from external interferences such as electrostatic fields and high-frequency electromagnetic waves. Such disturbances can be caused by AM/FM radio waves, CRT oscilloscopes, and fluorescent light strips.

Faraday cages minimize the electromagnetic waves that interfere with an object placed within them. Waves that are significantly longer than the mesh spacing will be blocked. Thorlabs has designed the FAR01 Faraday Cage to attach to 750 mm x 900 mm ScienceDesk frames, with a shielding effectiveness greater than 70 dB (at 10 MHz).

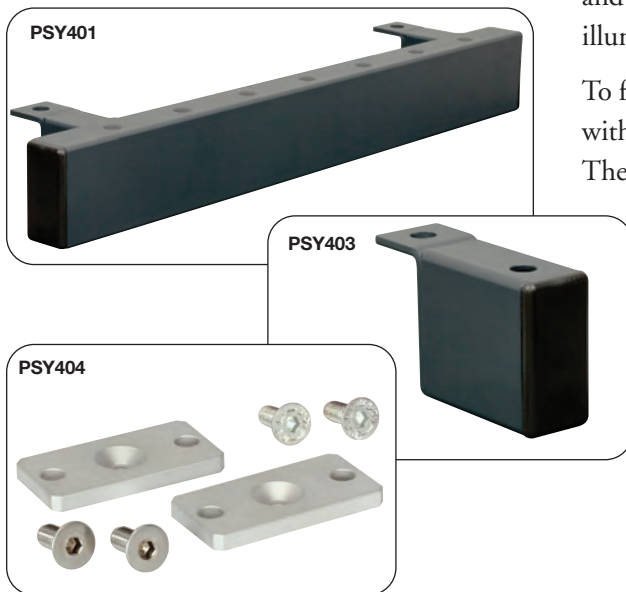
The FAR01 is the perfect companion to the ScienceDesk. All post-mounted ScienceDesk accessories can be mounted within the cage. Experiments within the cage can be easily accessed as the cage's panels are magnetically secured to the frame and lift away. Two feed-through ports on the back panel allow for cabling to and from the experiment, typically used for microscope illumination and motorized stage cabling.

To further enhance the usability of a ScienceDesk outfitted with a Faraday Cage, additional accessories are available.

The PSY404 attaches XE25 rails within the cage. Custom mounting solutions can thus be constructed. The PSY401 is a bracket that provides 7 holes for ScienceDesk post-mounted accessories to be attached outside of the cage. Additionally, a side shelf can latch to the bracket and offers significant workspace outside of the isolated experiment. Lastly, the PSY403 is a single-post bracket that can be used to mount accessories, such as post-mounted monitor mounts, outside the cage.



ScienceDesk with Faraday Cage and Accessories



ITEM #	\$	£	€	RMB	DESCRIPTION
FAR01	\$ 2,500.01	£ 1,725.00	€ 2,225.08	¥ 21,100.00	Faraday Enclosure for 750 mm x 900 mm ScienceDesk Frame
PSY401	\$ 130.00	£ 89.70	€ 115.70	¥ 1,097.20	750 mm Faraday Enclosure Side Shelf/External Post Adapter
PSY403	\$ 50.00	£ 34.50	€ 44.50	¥ 422.00	Faraday Enclosure Single External Post Adapter
PSY404	\$ 40.00	£ 27.60	€ 35.60	¥ 337.60	Faraday Enclosure XE25 Adapter Plate



THORLABS



***USA, Canada,
and South America***

Thorlabs, Inc.
435 Route 206
Newton, NJ 07860
USA
Tel: 973-579-7227
Fax: 973-300-3600
www.thorlabs.com
email: feedback@thorlabs.com

Europe

Thorlabs GmbH
Hans-Böckler-Str. 6
85221 Dachau
Germany
Tel: +49-(0)8131-5956-0
Fax: +49-(0)8131-5956-99
www.thorlabs.de
email: Europe@thorlabs.com

UK and Ireland

Thorlabs LTD.
1 Saint Thomas Place, Ely
Cambridgeshire CB7 4EX
Great Britain
Tel: +44 (0)1353-654440
Fax: +44 (0)1353-654444
www.thorlabs.com
email: sales.uk@thorlabs.com

Japan

Thorlabs Japan Inc.
5-17-1, Ohtsuka
Bunkyo-ku, Tokyo 112-0012
Japan
Tel: +81-3-5979-8889
Fax: +81-3-5979-7285
www.thorlabs.jp
email: sales@thorlabs.jp

Scandinavia

Thorlabs Sweden AB
Box 141 94
400 20 Göteborg
Sweden
Tel: +46-31-733-30-00
Fax: +46-31-703-40-45
www.thorlabs.com
email: scandinavia@thorlabs.com

China

Thorlabs China
Oasis Middlering Centre
3 Building 712 Room
915 Zhen Bei Road
Shanghai
CHINA
Tel: +86 (0)21-32513486
Fax: +86 (0)21-32513480
www.thorlabs.com
email: chinasales@thorlabs.com

France

Thorlabs SAS
109, rue des Côtes
78600 Maisons-Laffitte
FRANCE
Tel: +33 (0) 970 444 844
Fax: +33 (0) 811 381 748
www.thorlabs.de
email: sales.fr@thorlabs.com