



okti®

Simply done right.

Wireless, Ambulatory
& Portable EEG.



Simply done right.
Wireless, Ambulatory and Portable EEG.

One device - multiple studies

Okti® is the culmination of decades of experience in EEG monitoring and a deep understanding of patient care.

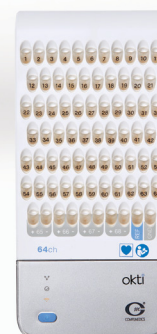
Okti is the world's first high-density ambulatory EEG amplifier that can also be used for Routine & Long Term EEG. By combining several different channel interfaces into a compact hand-held format, Okti® enables patients to undergo high resolution studies without being tethered to fixed equipment.

Key Features

- High-density EEG/PSG
- Portable, Ambulatory LTM and Clinical Routine EEG studies
- Full PSG Sleep studies
- Modular design with interchangeable 32, 64 and 128 channel interfaces. Replaces three different devices
- Paediatric and adult applications
- Protective lockable shell-case, no interference with the device
- 72 hours battery life (full study), with hot swappable batteries
- Full list of accessories, backpack, waist pack, integrated cable management and cradle
- Reusable and disposable wearable versions (helps with infection control)



® okti32



® okti64



® okti128

Three devices in one - Interchangeable 32, 64 and 128 channel interfaces.

Compact, wireless and portable EEG recorder system for long term epilepsy monitoring.

Reconfigurable modules for 32, 64, 128 Channel electrode head cap system.

Multiple units can be tethered to provide larger connections, up to 512 Channels.



Multi use bracket for fixed studies

Built in large 72 hour battery. Hot - swappable for extended study length

Integrated data storage

10 /20 32 Channel Module

SD card for flexible data transfer

64 Channel Module

128 Channel Head Cap Module

Okti opens the door from Routine, Ambulatory & Long Term EEG right up to cutting edge studies including neuro-cognitive research and stereotactic EEG, whilst giving patients the freedom to move and interact outside the confines of clinical settings.

Okti Features

Lockable protective case

Protects against deliberate or accidental electrode removal.



Smart cable management

Easy manage cable wrap system. Reusable and disposable versions.

Patented electrode Illumination system

Enhances the speed of set-up.

Bluetooth real-time patient tracking

WiFi and Ethernet connectivity

Okti® System Trolley



Trolley may vary in your region. Please contact your local representative for details.

Okti® Accessories

Ambulatory wearables

A full range of ambulatory wearables are available in both adult and children's sizes. The ergonomically designed backpacks and waist packs come in fashionable and fun patterns in both reusable and disposable versions. The disposable wearables are splash resistant and can assist in infection control.

Adult backpack and waist pack

Designed to give ample support and flexibility to move around. Comes in both reusable and disposable designs.



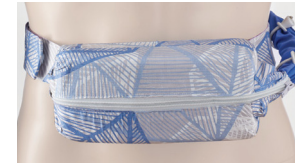
Reusable adult backpack

Child backpack

Distributes load more effectively for children, whilst still giving them the freedom to play. Pattern design is playful and fun, easing the anxiety of the process.



Reusable adult waist pack



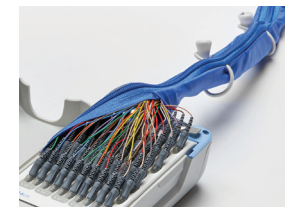
Disposable adult waist pack



Disposable child backpack

Smart snake cable management

Easy manage cable wrap system comes in both reusable and disposable versions.



Reusable snake cable



Disposable snake cable

All specifications are subject to change without notice. Please contact your Compumedics representative for latest technical information, pricing and product availability. Compumedics Okti, COMPUMEDICS and the Compumedics logo are registered trademarks of Compumedics.

